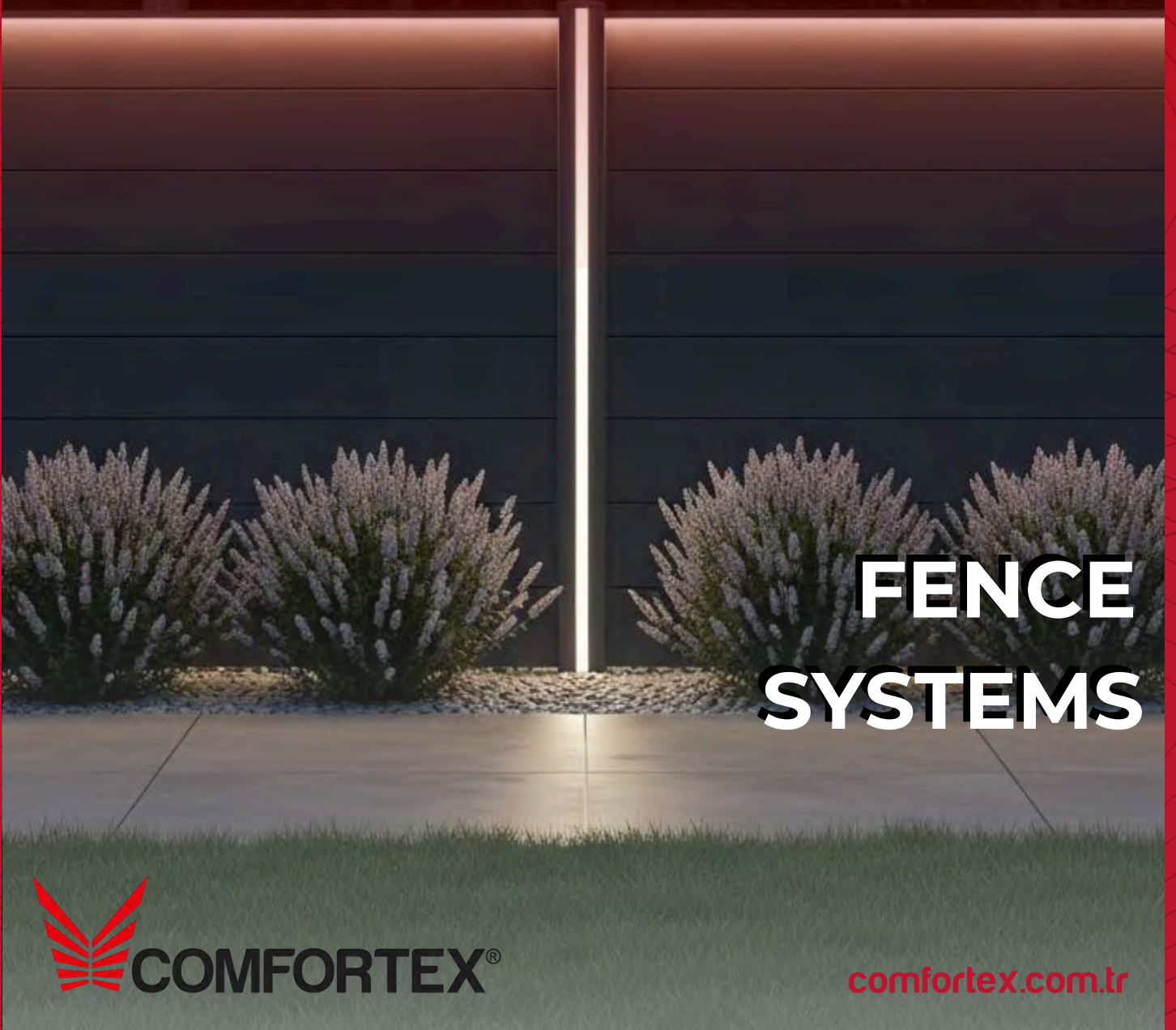


**CHANGING
THE WORLD
THROUGH
INNOVATED
IDEAS**

2025 © Comfortex. All right reserved.



**FENCE
SYSTEMS**

 **COMFOTEX®**

comfortex.com.tr

Overview of Our Product Lines

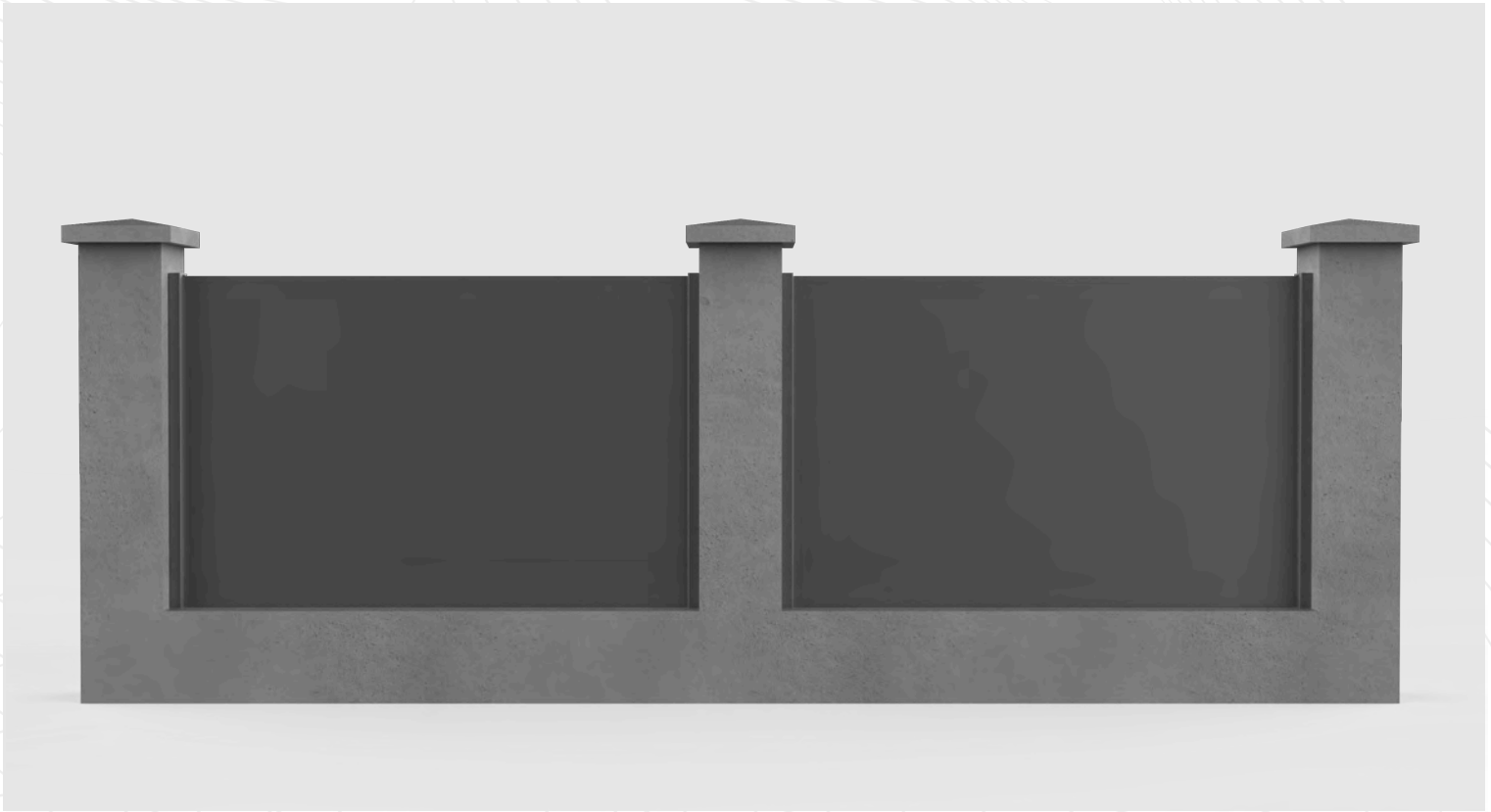
Our product lines showcased in this catalog are designed with a modern aesthetic and built to meet high durability standards. From aluminum panels to garden protection systems and privacy fences, our extensive range offers solutions tailored for both residential and commercial applications.

Combining sleek design with practical functionality, our products guarantee long-lasting and reliable performance. In this section, you will explore the features, applications, and benefits of each product group, helping you easily identify the best options for your needs. Our goal is to enhance your living and working spaces by making them safer, more stylish, and highly functional.

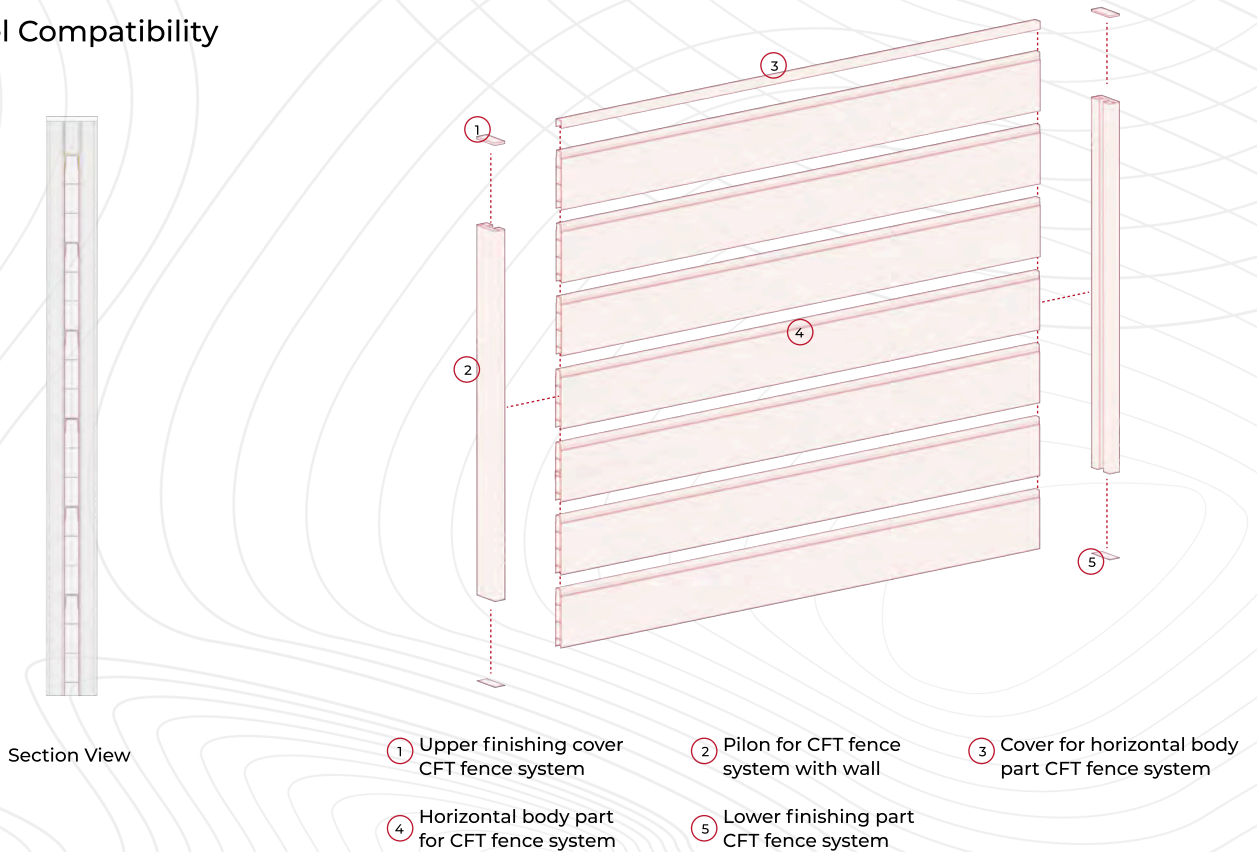
Tall Flat Profile Fence Systems

This profile features a tall, flat-topped, and simple design, providing extra space for the integration of external components. It is especially ideal for corporate environments and large-scale projects.

With its structure suitable for additional attachments, it offers flexible solutions and harmonizes well with modern fence systems.



Panel Compatibility

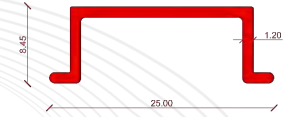
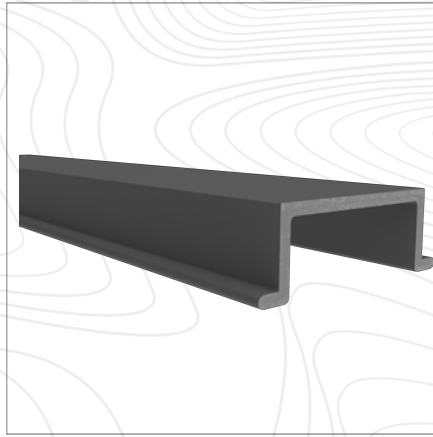




Cover For Pilon CFT Fence System

CFT-FENS-TC

Top cap for the main vertical post of the CFT fence system; provides a finished and aesthetic appearance.



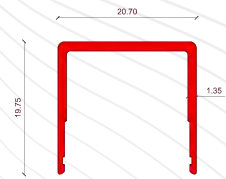
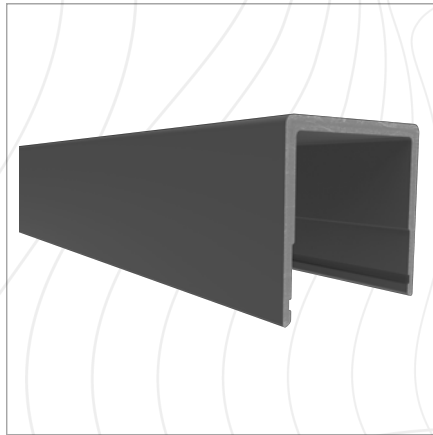
External Dimensions: 25.00 mm x 8.45 mm
Installation: Snap-fit

51178

Cover For Horizontal Body Part CFT Fence System

CFT-FENS-TP

Top profile of CFT fence panels; provides a finished and aesthetic appearance.



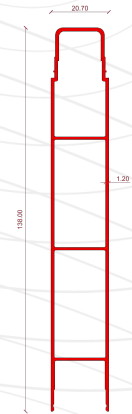
External Dimensions: 20.70 mm x 19.75 mm
Installation: Snap-fit

51175

Horizontal Body Part For CFT Fence System

CFT-FENS-HP140

Horizontal profiles forming the CFT fence panels; allow easy, screw-free, interlocking assembly. 140 mm.



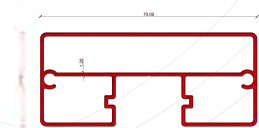
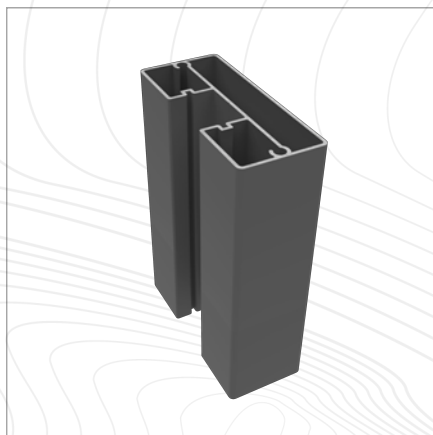
External Dimensions: 20.70 mm x 138.00 mm
Installation: Snap-fit

51174

Pilon for CFT Fence System With Wall

CFT-FENS-VP-WM

Main vertical post of the CFT wall-mounted fence system; fixed to the wall instead of the ground to support other components.



External Dimensions: 30.00 mm x 70.00 mm
Installation: Screw-on

51173



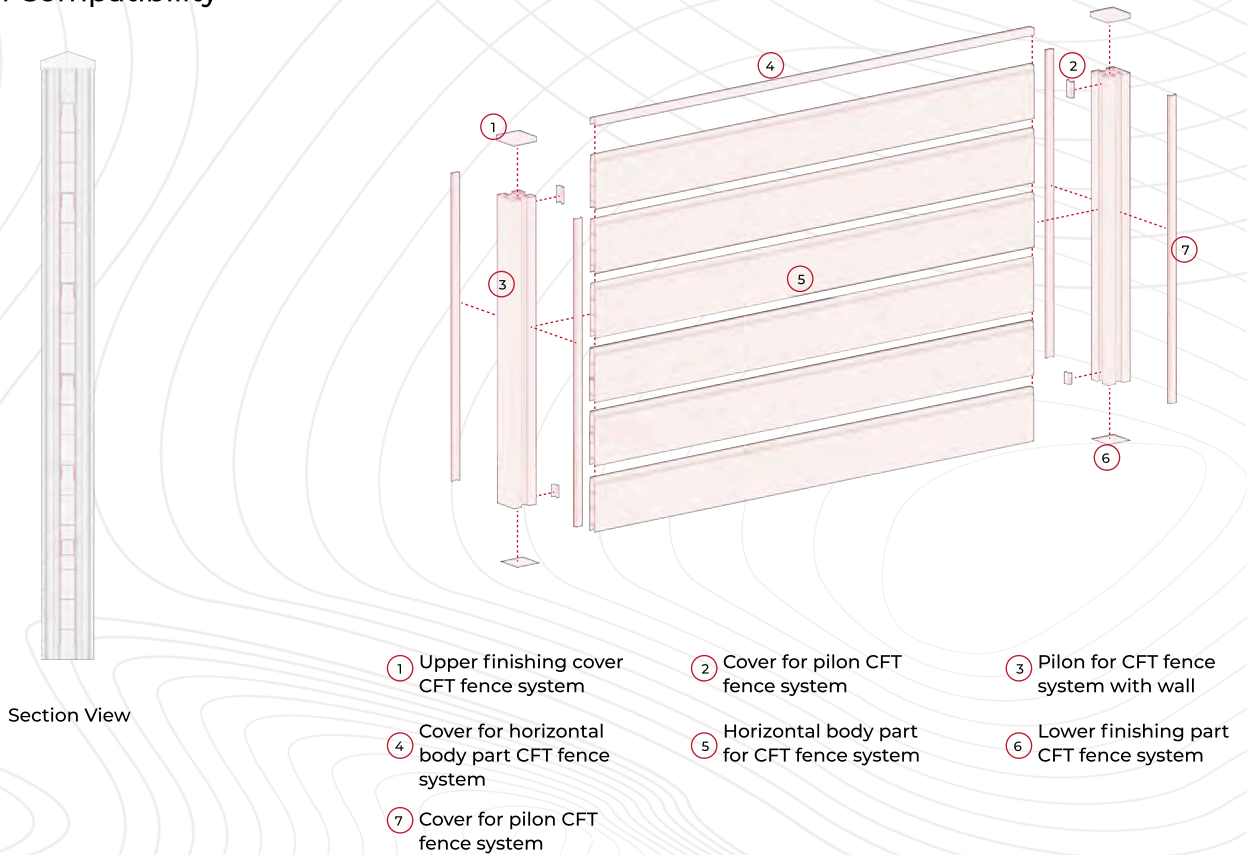
Modern Flat Top Fence

This post model features a conical-shaped cap at the top, giving it a classic and timeless appearance in fencing systems. The cap not only enhances its aesthetic appeal but also provides protection against external elements.

Its classic design makes it especially preferred in residential applications, garden and private living spaces.



Panel Compatibility

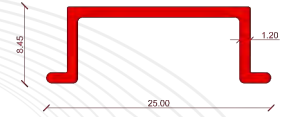
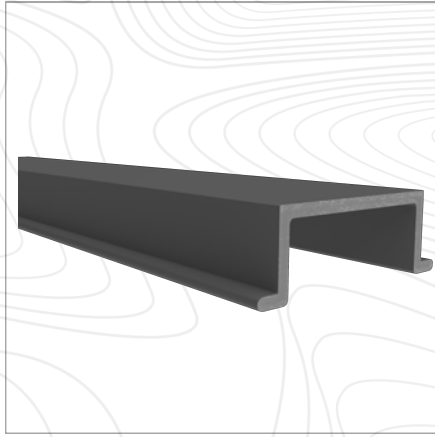




Cover For Pilon CFT Fence System

CFT-FENS-TC

Top cap for the main vertical post of the CFT fence system; provides a finished and aesthetic appearance.



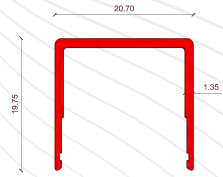
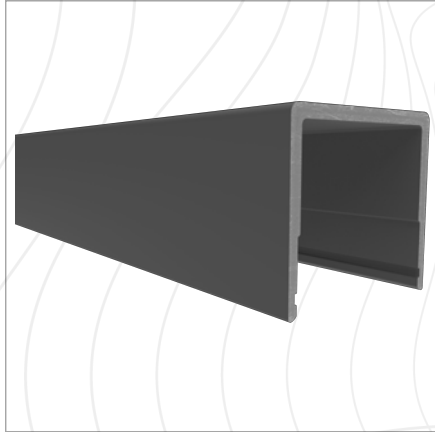
External Dimensions: 25.00 mm x 8.45 mm
Installation: Snap-fit

51178

Cover For Horizontal Body Part CFT Fence System

CFT-FENS-TP

Top profile of CFT fence panels; provides a finished and aesthetic appearance.



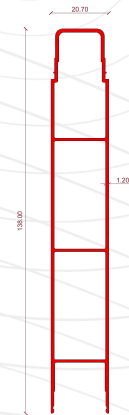
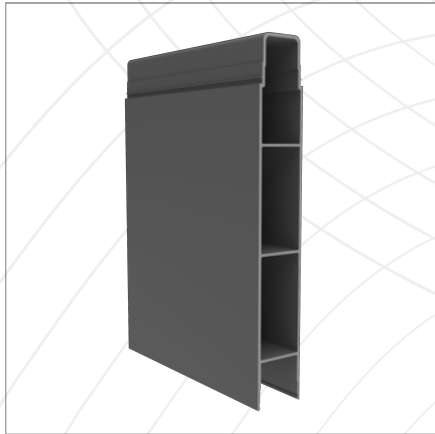
External Dimensions: 20.70 mm x 19.75 mm
Installation: Snap-fit

51175

Horizontal Body Part For CFT Fence System

CFT-FENS-HP140

Horizontal profiles forming the CFT fence panels; allow easy, screw-free, interlocking assembly. 140 mm.



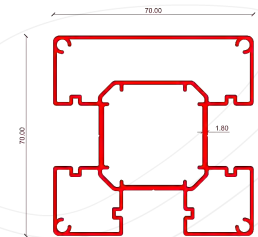
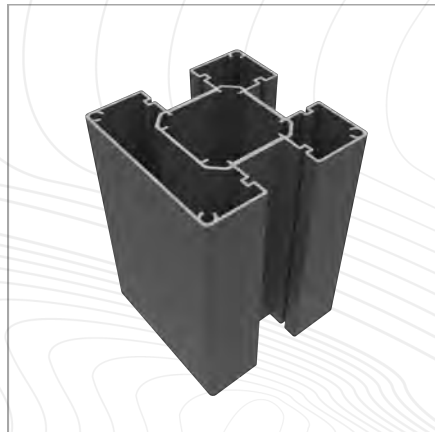
External Dimensions: 20.70 mm x 138.00 mm
Installation: Snap-fit

51174

Pilon for CFT Fence System With Wall

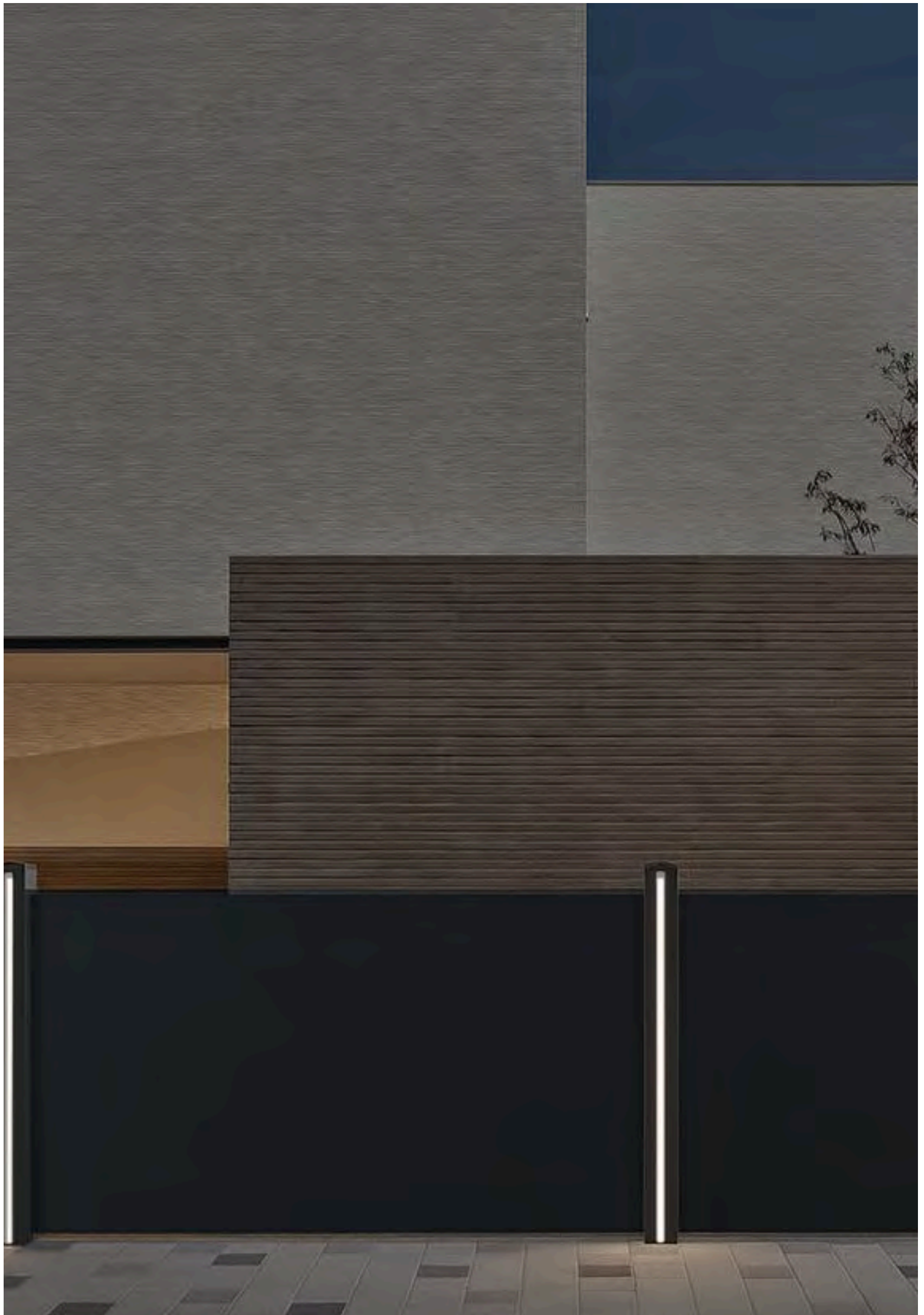
CFT-FENS-VP

Main vertical post of the CFT fence system; fixed to the ground and supports the assembly of other components.



External Dimensions: 70.00 mm x 70.00 mm
Installation: Screw-on, snap-fit

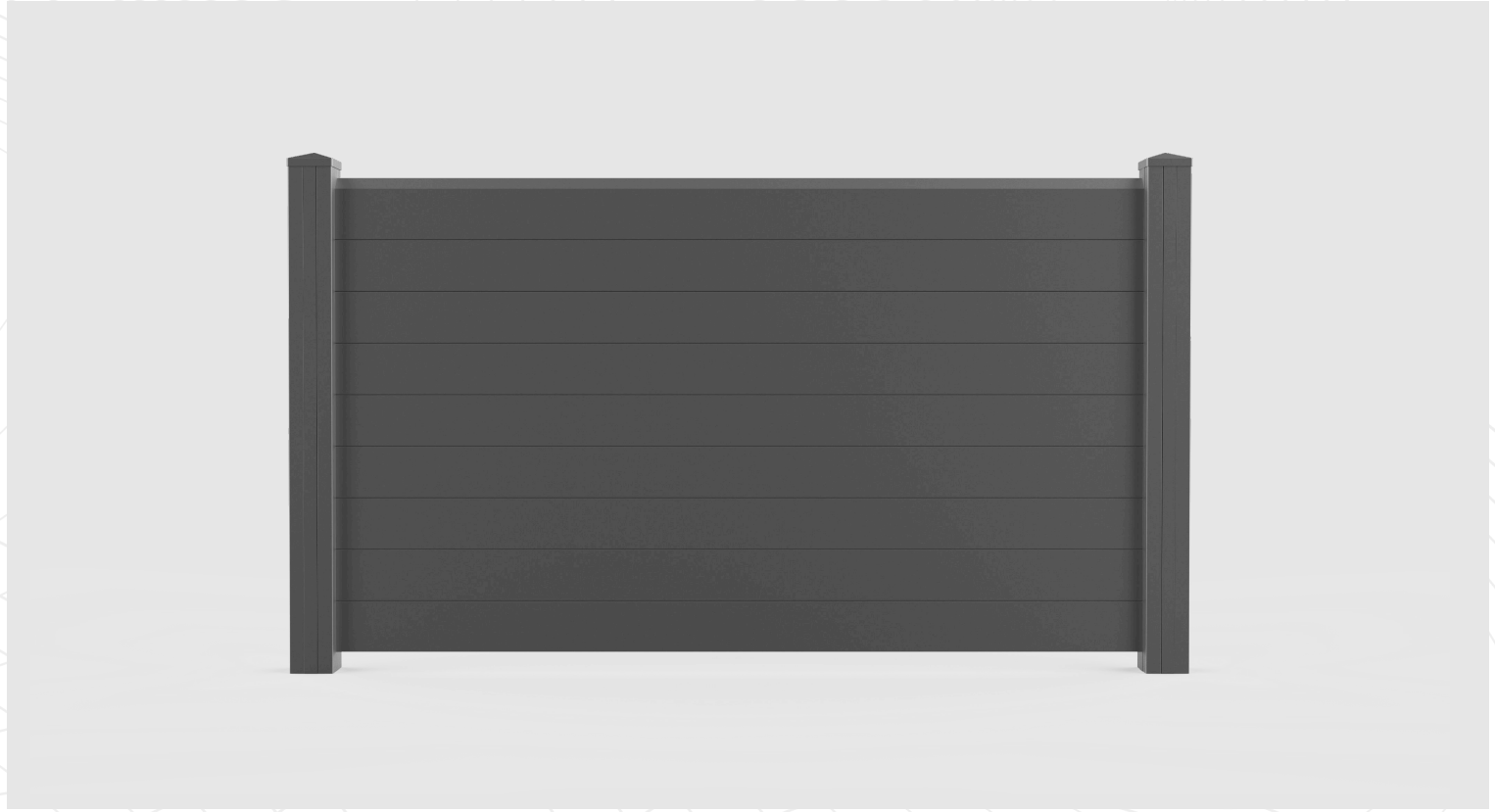
51177



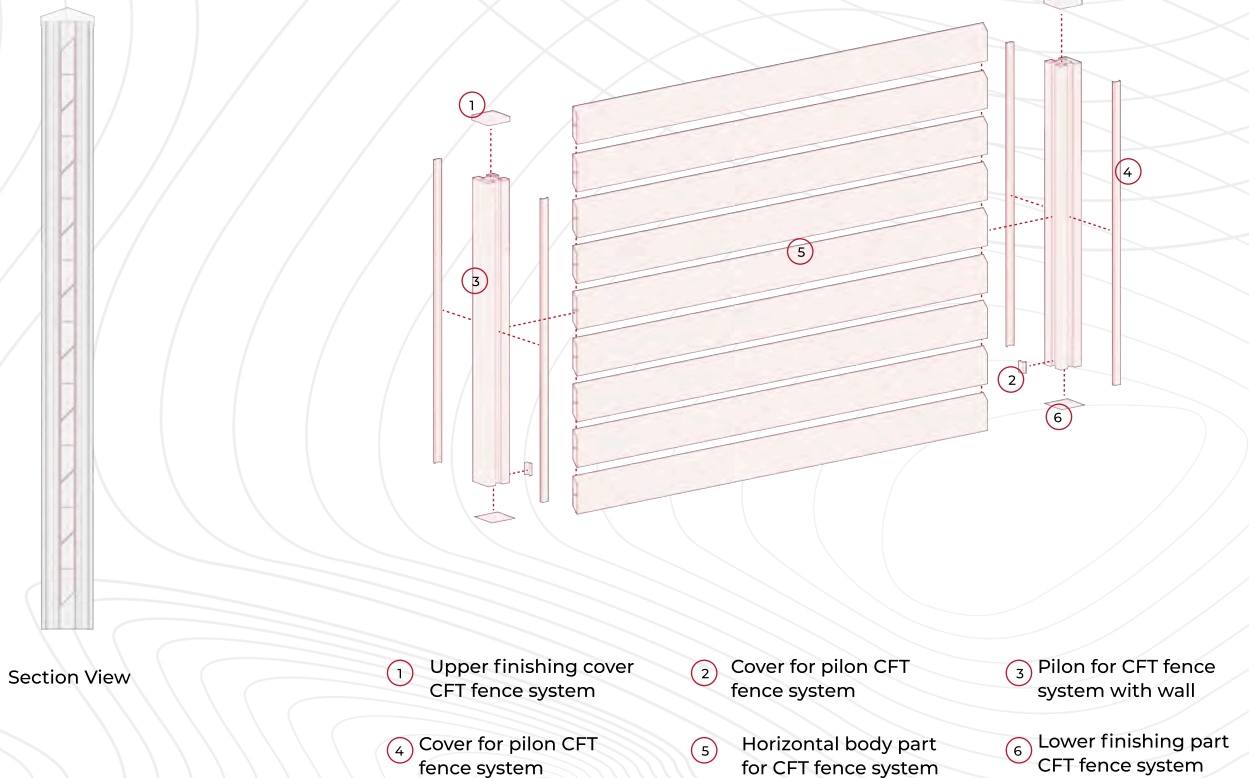
Reinforced Angular Top Fence

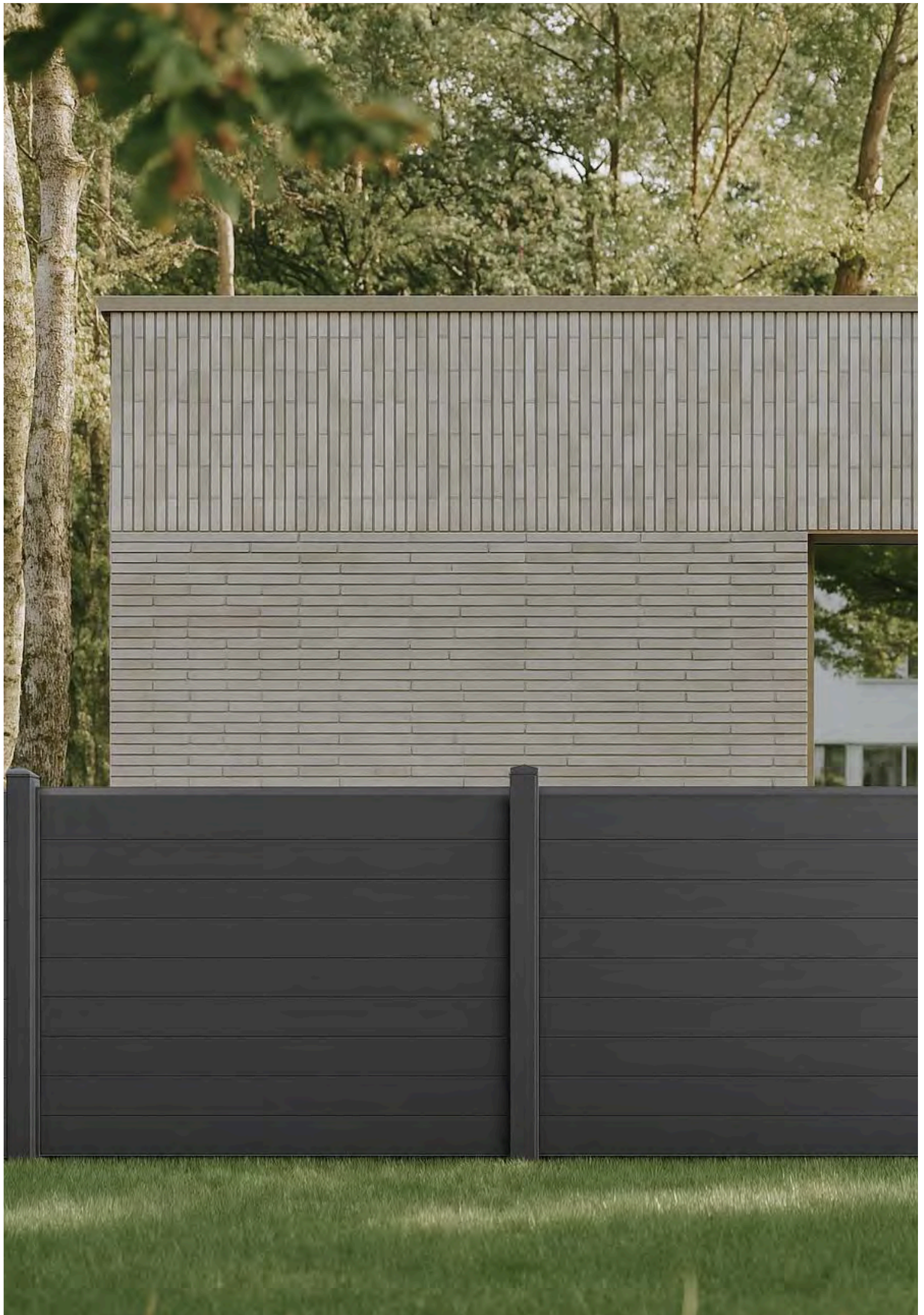
This profile is designed with a distinctive angular top that adds both visual character and functional strength.

The reinforced structure offers enhanced resistance against physical impacts and external conditions, making it suitable for high-security areas.



Panel Compatibility

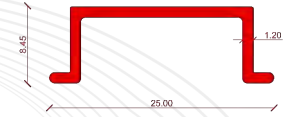
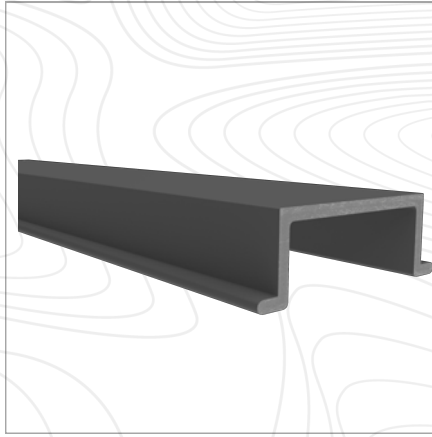




Cover For Pilon CFT Fence System

CFT-FENS-TC

Top cap for the main vertical post of the CFT fence system; provides a finished and aesthetic appearance.



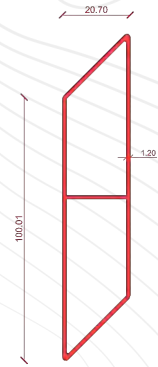
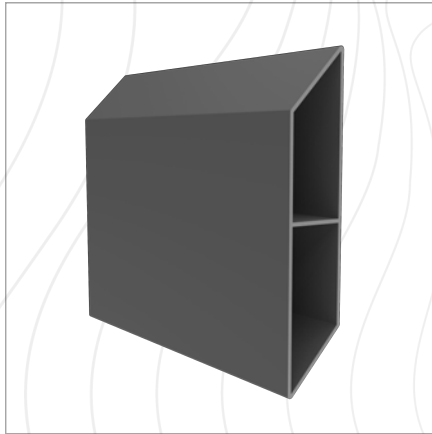
External Dimensions: 25.00 mm x 8.45 mm
Installation: Snap-fit

51178

Horizontal Body Part For CFT Fence System

CFT-FENS-HP100

Horizontal profiles forming the CFT fence panels; allow easy, screw-free, interlocking assembly. 100 mm.



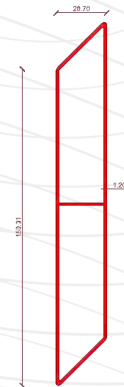
External Dimensions: 20.70 mm x 100.01 mm
Installation: Screw-on, snap-fit

51351

Horizontal Body Part For CFT Fence System

CFT-FENS-HP150

Horizontal profiles forming the CFT fence panels; allow easy, screw-free, interlocking assembly. 150 mm.



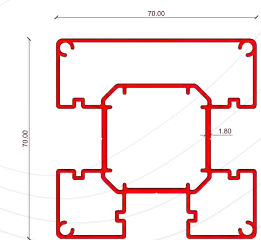
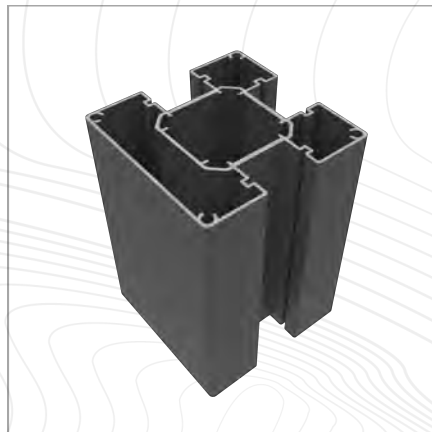
External Dimensions: 20.70 mm x 150.01 mm
Installation: Snap-fit

51350

Pilon for CFT Fence System With Wall

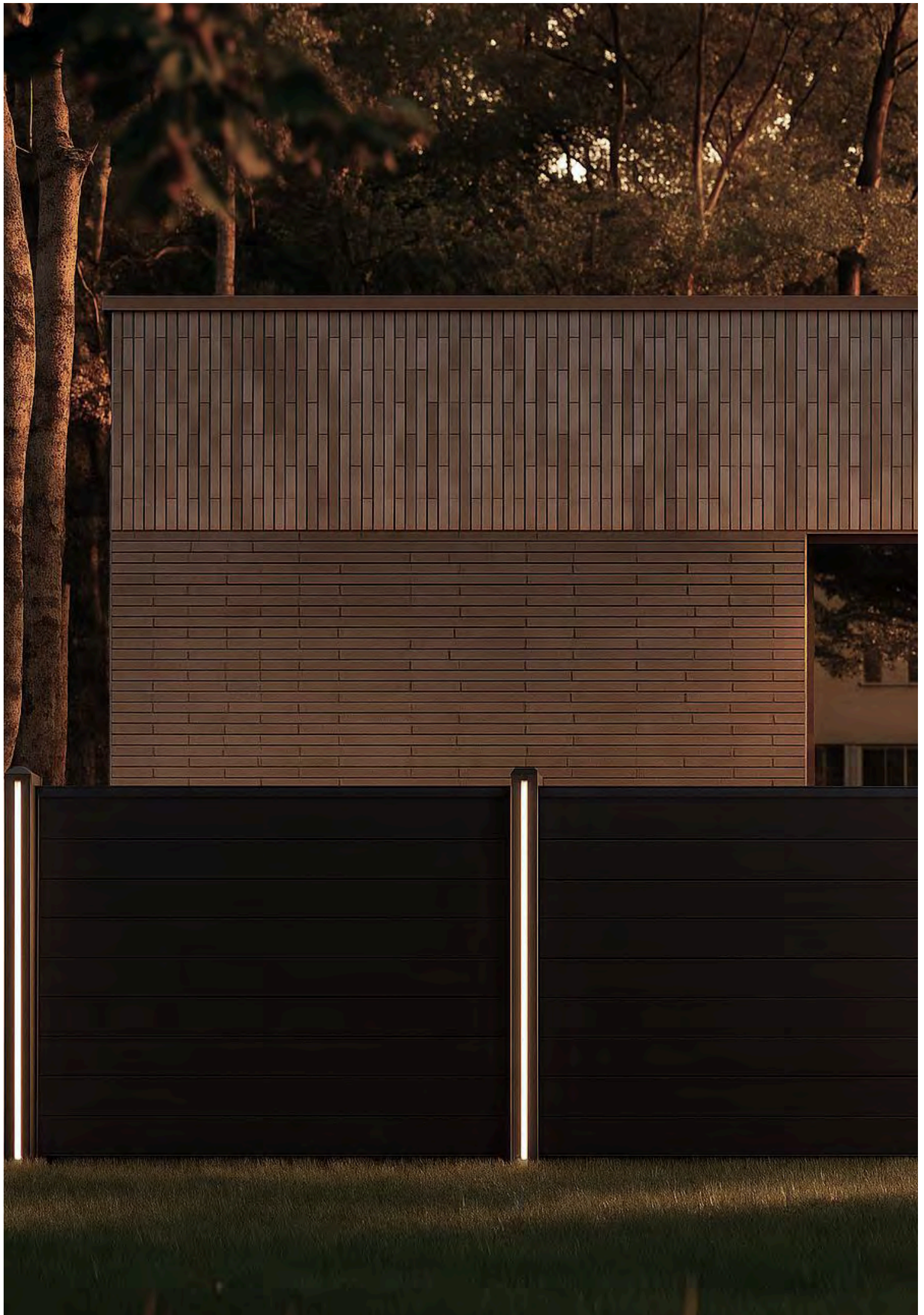
CFT-FENS-VP

Main vertical post of the CFT fence system; fixed to the ground and supports the assembly of other components.



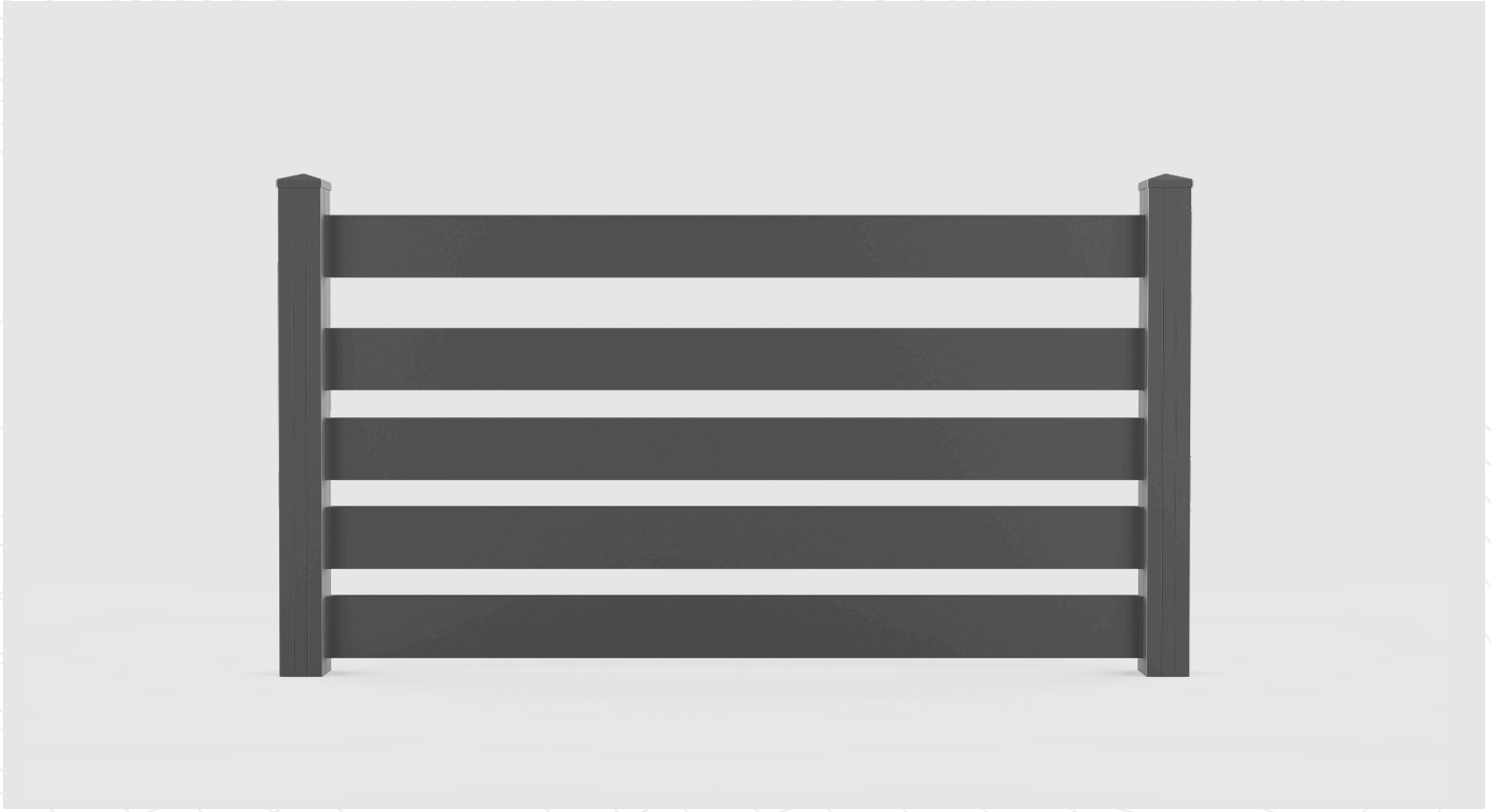
External Dimensions: 70.00 mm x 70.00 mm
Installation: Screw-on, snap-fit

51177

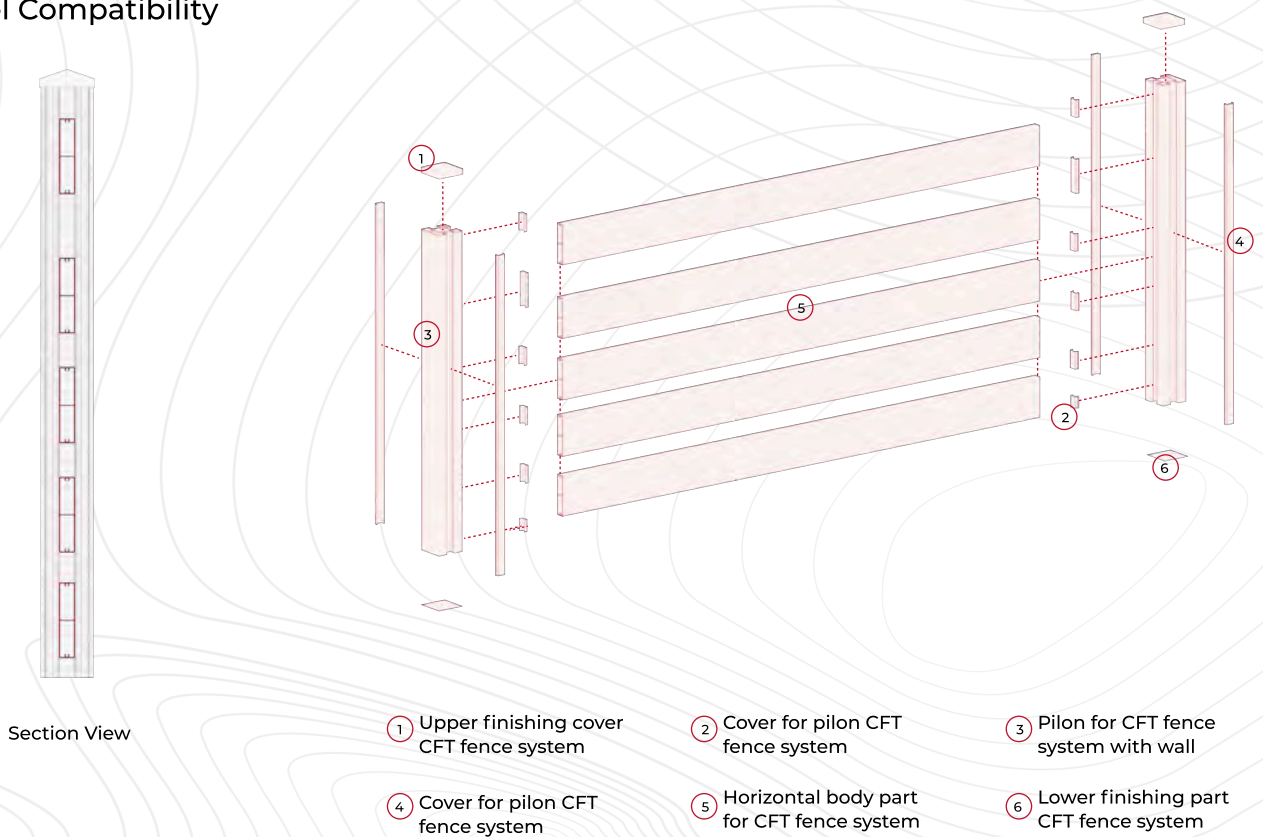


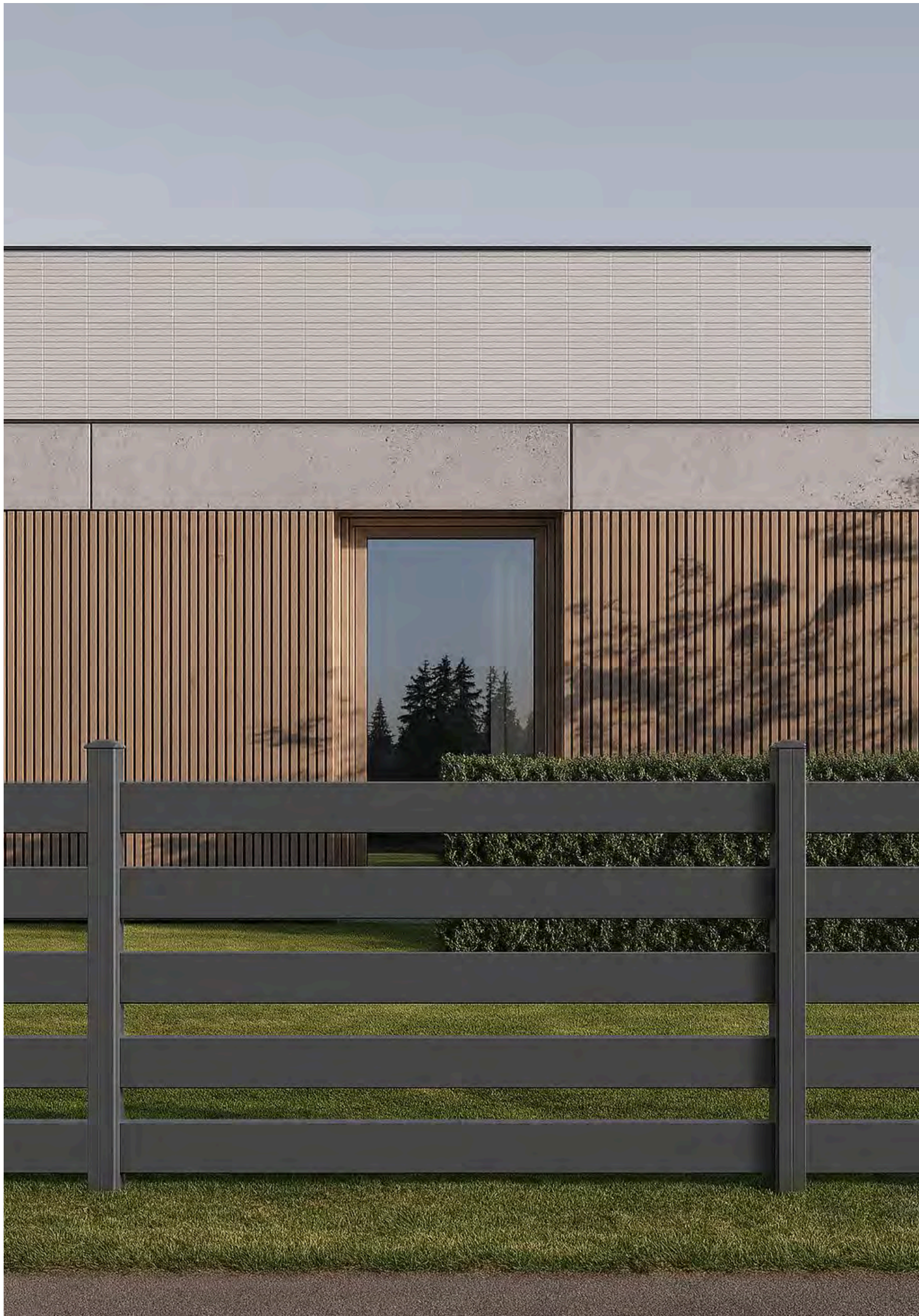
Classic Capped Fence

This post model features a conical-shaped cap at the top, giving it a classic and timeless appearance in fencing systems. The cap not only enhances its aesthetic appeal but also provides protection against external elements. Its classic design makes it especially preferred in residential applications, garden enclosures, and private living spaces.



Panel Compatibility

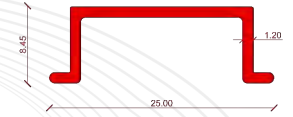
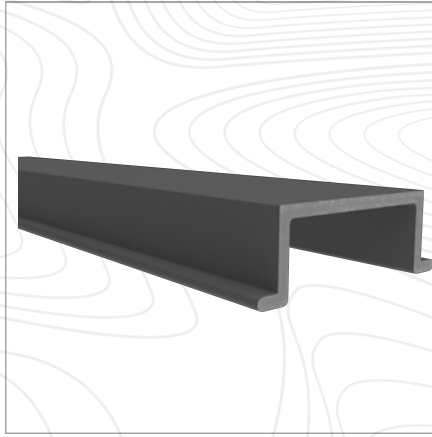




Cover For Pilon CFT Fence System

CFT-FENS-TC

Top cap for the main vertical post of the CFT fence system; provides a finished and aesthetic appearance.



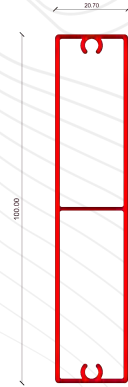
External Dimensions: 25.00 mm x 8.45 mm
Installation: Snap-fit

51178

Horizontal Body Part For CFT Fence System

CFT-FENS-HPV100

Horizontal profile for CFT fence panels; allows visibility through the panel and reduces wind load. 100 mm.



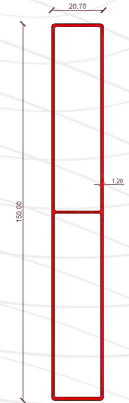
External Dimensions: 20.70 mm x 100.00 mm
Installation: Snap-fit

51176

Horizontal Body Part For CFT Fence System

CFT-FENS-HPV150

Horizontal profile for CFT fence panels; allows visibility through the panel and reduces wind load. 150 mm.



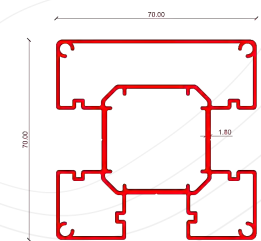
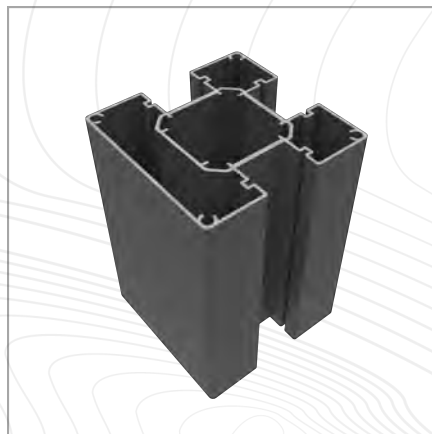
External Dimensions: 20.70 mm x 150.00 mm
Installation: Snap-fit

51349

Pilon for CFT Fence System With Wall

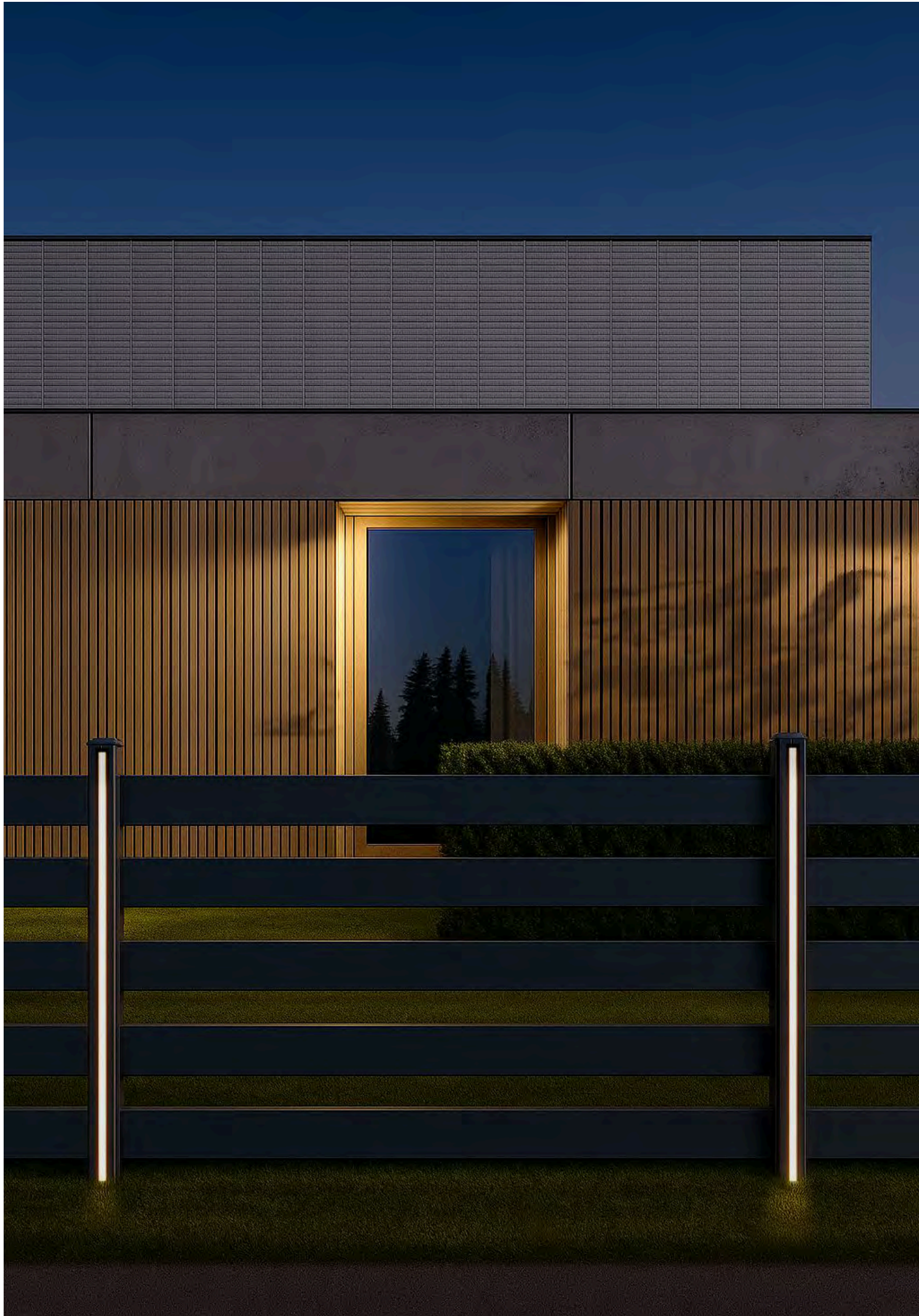
CFT-FENS-VP

Main vertical post of the CFT fence system; fixed to the ground and supports the assembly of other components.



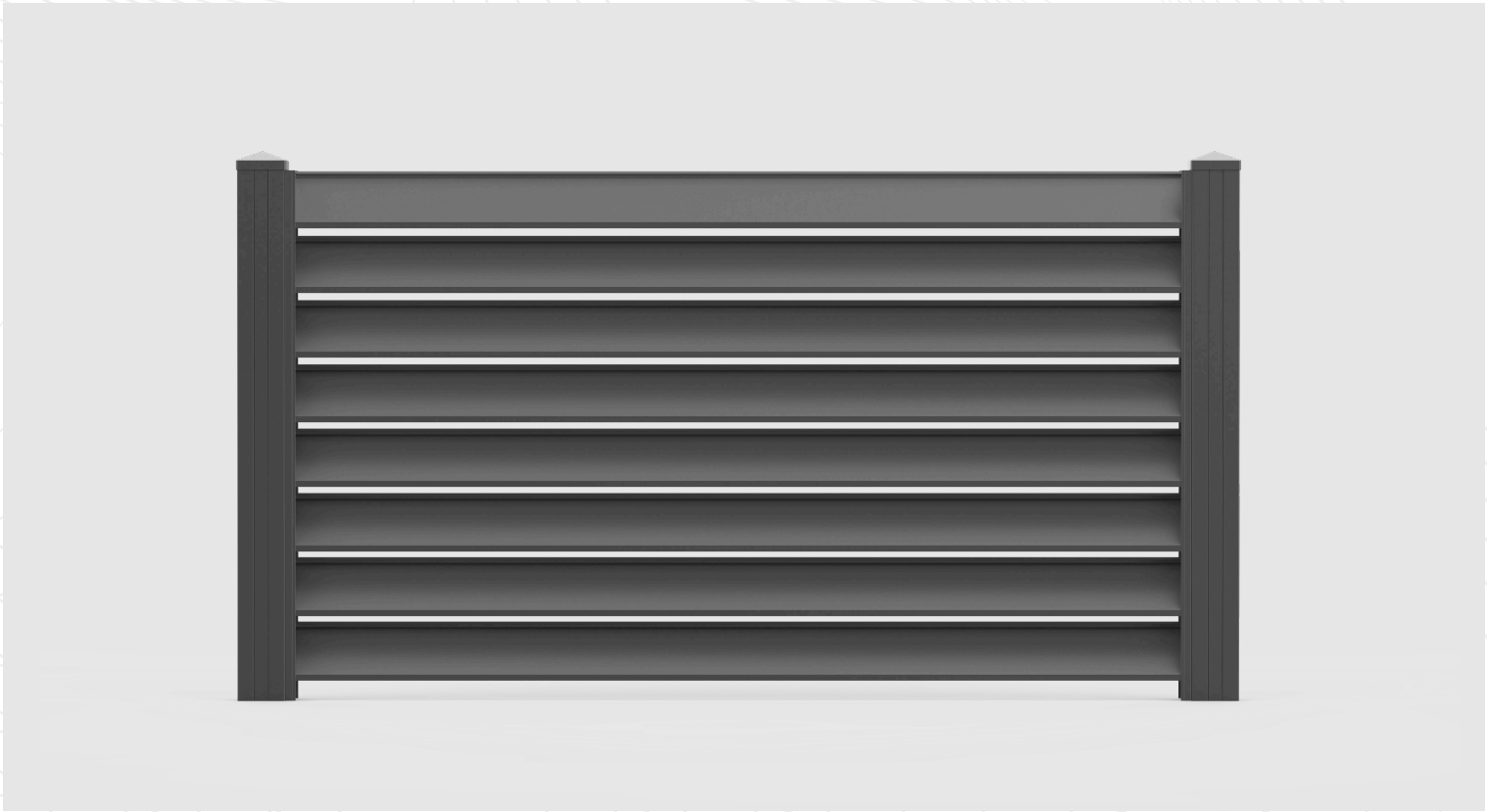
External Dimensions: 70.00 mm x 70.00 mm
Installation: Screw-on, snap-fit

51177

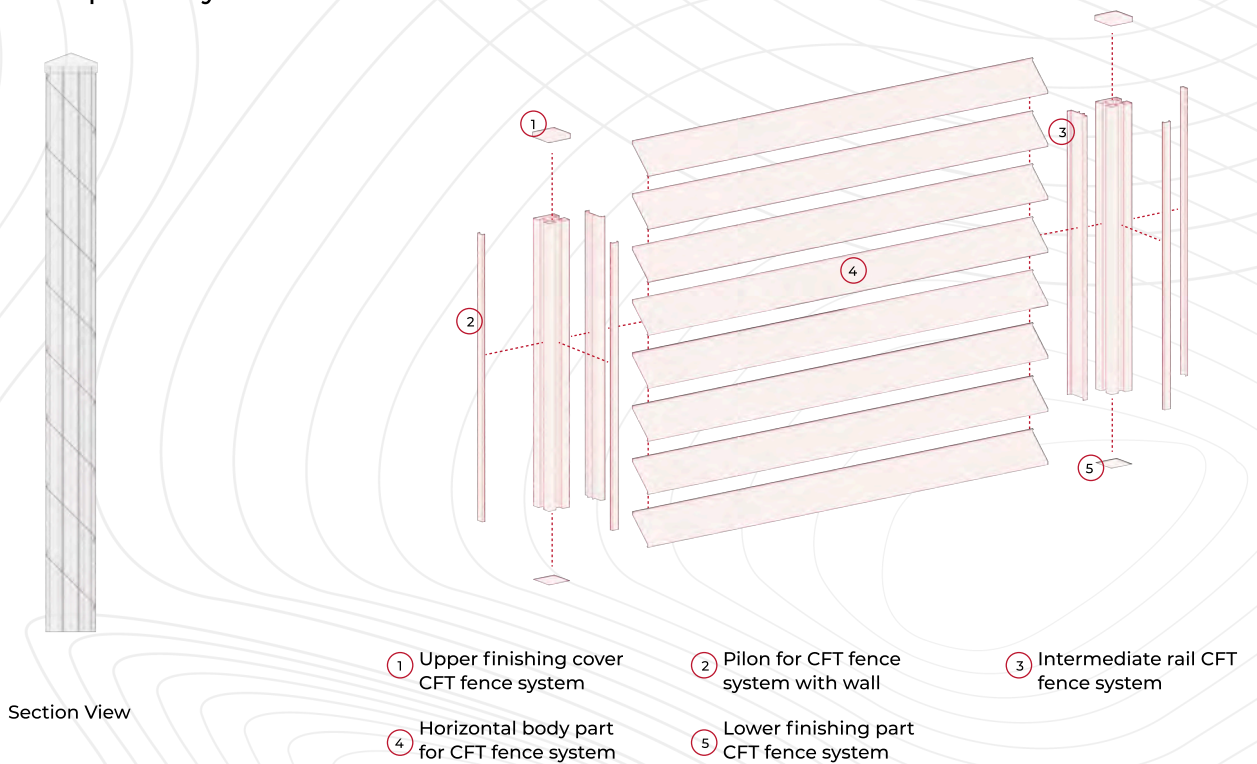


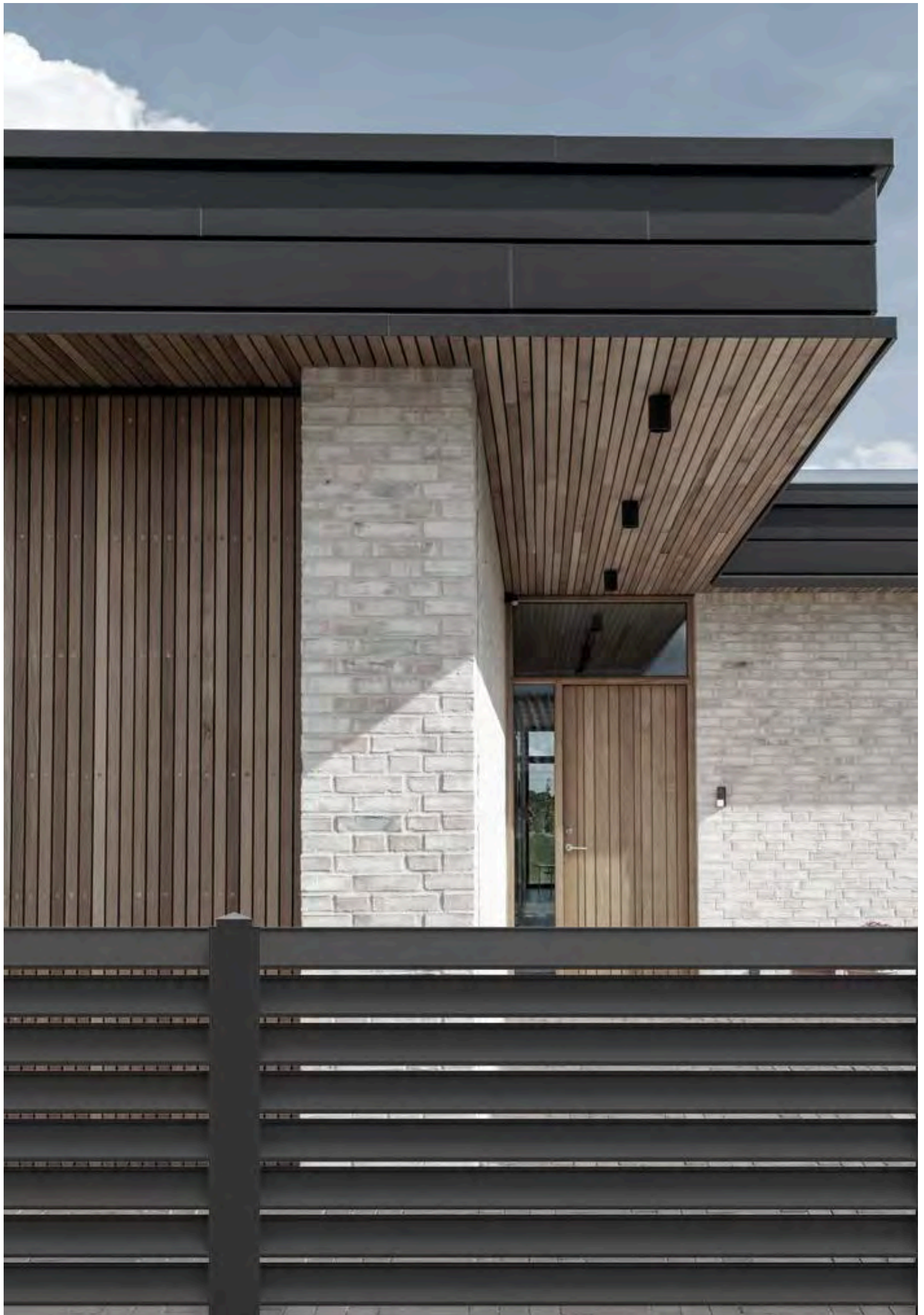
Louvered Fence Panel

This fence model features angled slats that are fixed in a consistent pattern, allowing controlled airflow while partially obstructing direct views. The louvered design offers a practical balance between ventilation and privacy, making it well-suited for residential gardens, patios, and semi-private outdoor areas.



Panel Compatibility

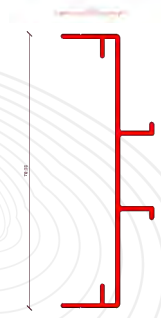
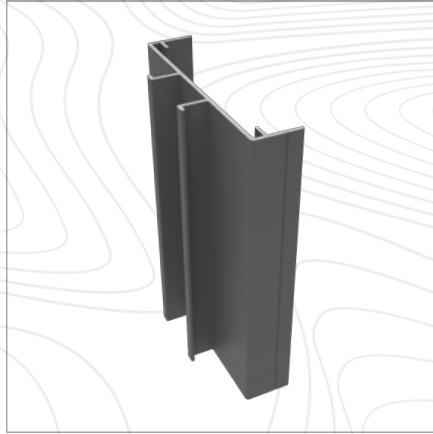




Intermediate Rail CFT Fence System

CFT-FENS-CON

Used by mounting onto the vertical main post, serves as a connecting element for the special CFT fence series with moulding design.



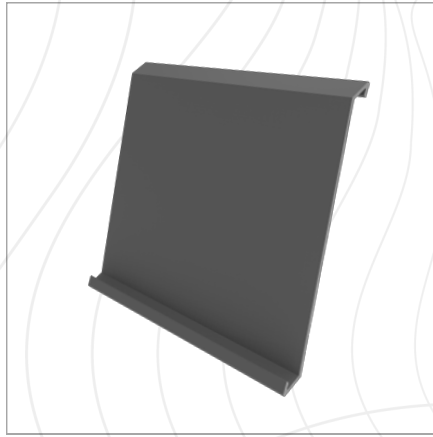
External Dimensions: 15.00 mm x 70.00 mm
Installation: Snap-fit

51261

Horizontal Body Part For CFT Fence System

CFT-FENS-HP-PV

Horizontal moulding profile of the special CFT fence series with moulding design.



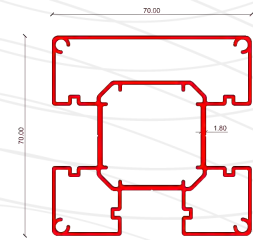
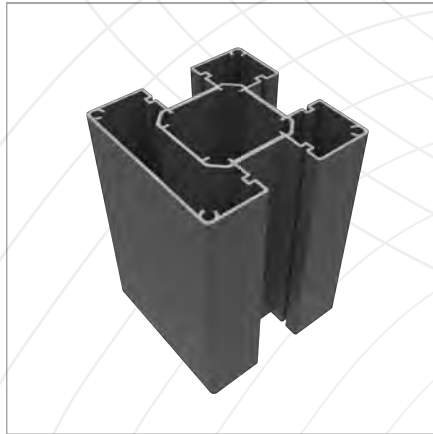
51260

External Dimensions: 106.73 mm
Installation: Screw-on, snap-fit

Pilon for CFT Fence System With Wall

CFT-FENS-VP

Main vertical post of the CFT fence system; fixed to the ground and supports the assembly of other components.



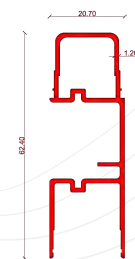
External Dimensions: 70.00 mm x 70.00 mm
Installation: Screw-on, snap-fit

51177

Light Module Part For CFT Fence System

CFT-FENS-LED

Led profile integrated into CFT fence panels; provides decorative and functional lighting.

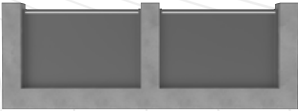










External Dimensions: 20.70 mm x 62.40 mm
Installation: Snap-fit

51348



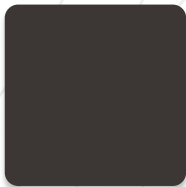
Fence Light Module Systems

Module Photo	Module Number	Short Title	Explanation	Mounting / Placement
	1	Top Light	Horizontal LED strip at the top edge enhances nighttime visibility and provides a modern look.	Wall-mounted panel
	2	Bottom Light	LED strip at the bottom edge illuminates the pathway and improves safety.	Wall-mounted panel
	3	Top + Vertical	LEDs on both the top and vertical edges provide uniform lighting and an impressive appearance.	Wall-mounted panel + Internal module
	4	Vertical	LEDs on the vertical edges deliver balanced light and a modern look.	Wall-mounted panel + Internal module
	5	Vertical Center + Bottom	Vertical center LED combined with bottom edge lighting offers aesthetics and safety.	Wall-mounted panel + Internal module
	6	Horizontal Center	Central horizontal LED delivers a modern and sleek appearance.	Wall-mounted panel
	7	Vertical	LEDs on the vertical edges deliver balanced light and a modern look.	Internal module
	8	Top + Vertical + Center	LEDs on the top, vertical edges, and center create a bold design statement.	Internal module
	9	Bottom + Vertical + Center	LEDs on the bottom, vertical edges, and center provide a strong and modern appearance.	Internal module

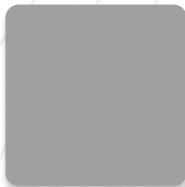
Color & Texture Palette



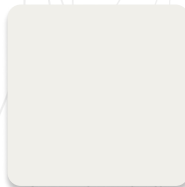
RAL 8014 Light Brown



RAL 8019 Dark Brown



RAL 9006 Gray



RAL 9016 White



RAL 7016 Antrasit



RAL 9005 Black



Eiche Dunkel



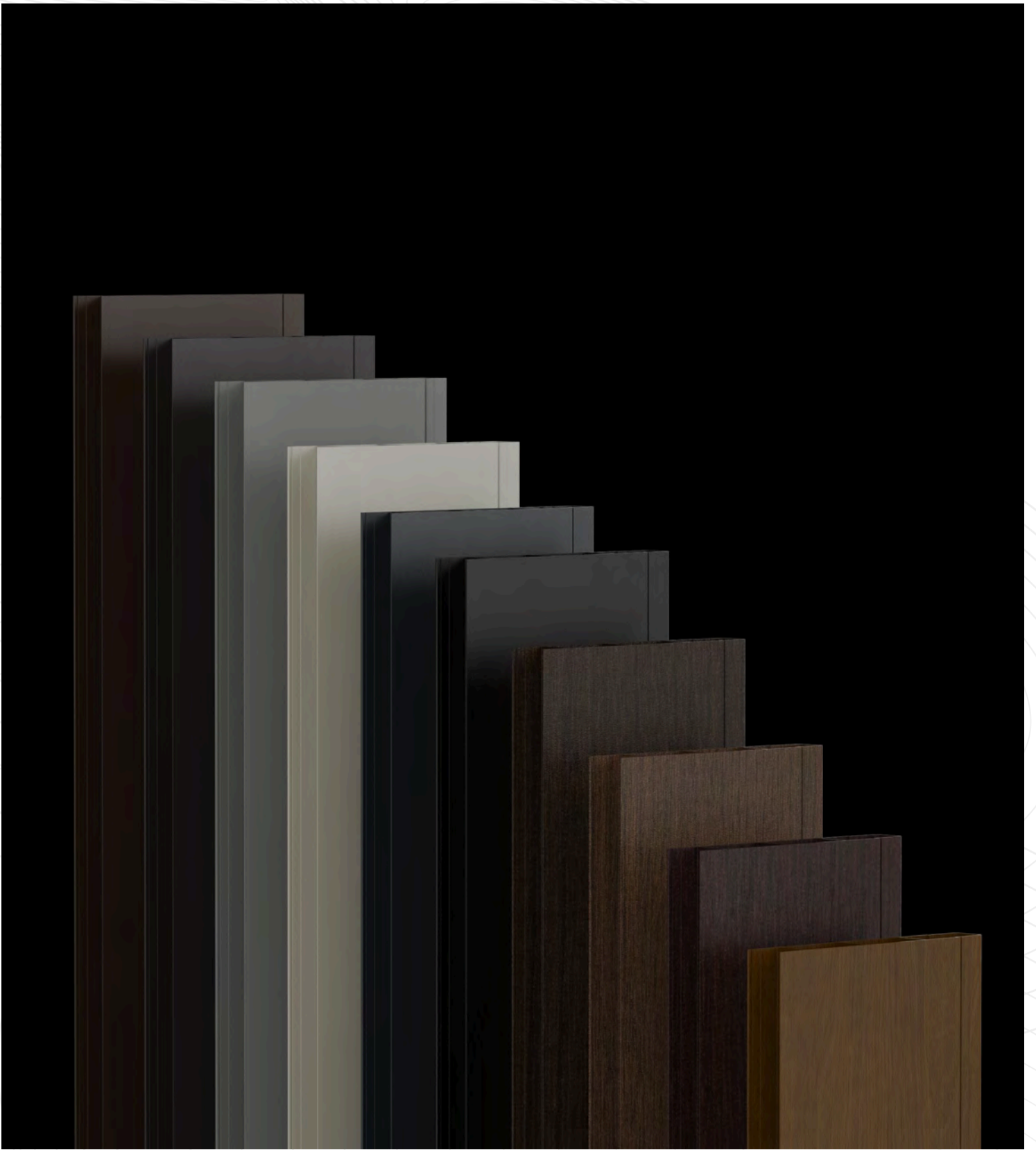
Nussbaum



Sapeli



Golden Oak



Our products are offered with a wide range of color options to suit various interior styles and areas of use. combine aesthetics and durability with our matte, glossy, and wood-textured alternatives.

 **CFT**®

 **COMFORTEX**
alüminyum

 **COMFORTEX**
energy

 **COMFORTEX**
tehnosystems

 **COMFORTEX**
production

 **COMFORTEX**
install

 **COMFORTEX**
home design

 **COMFORTEX**
help

 **COMFORTEX**
pergola & glass systems

ALUTRADE
potențialul tău de încredere

qROLL
QUALITY FIRST